

RESIDENTIAL

Programme planner: Residential section

What is this programme planner for?

When completing each section of your DofE programme, you should develop a programme which is specific and relevant to you. This sheet will help you to plan your DofE programme for the Residential section. For help and support either see your DofE Leader or visit <https://www.dofe.org/opportunity-finder/> This gives you links to lots of ideas that have already been approved.

What is the Residential section about?

Going on a residential gives you the chance to learn how to teamwork with people from different backgrounds and build confidence living in new environments.

How long should I do the residential for?

The residential activity should normally take place over at least five consecutive days with a minimum of four nights spent away in shared accommodation with a peer group who don't know each other; staff you don't know and all on the same activity throughout this time.

Programme plan for: *(your name)*

Centre (School):

DofE Centre Leader:

What kind of activity would you like to carry out on your residential? *(tick/highlight)*

Activity based

Learning

Environment & conservation

Service to others

Have you followed through the flow chart over the page? yes/no

Are there any issues that need discussion?

Will you be going with anyone that you know? Staff included (see point 4 and 7 over).

If so, please detail who:

Apart from the leadership team, are there others going who already know each other? (NB school organised groups are highly unlikely to be of the right dynamic)

Organisation offering the Residential: (website link would be ideal):

Location:

Describe the activity chosen and the role you will play:

Are you in shared accommodation? (eg bunkhouse, camp, dormitory, hotel (at least twin rms)?

Please describe:

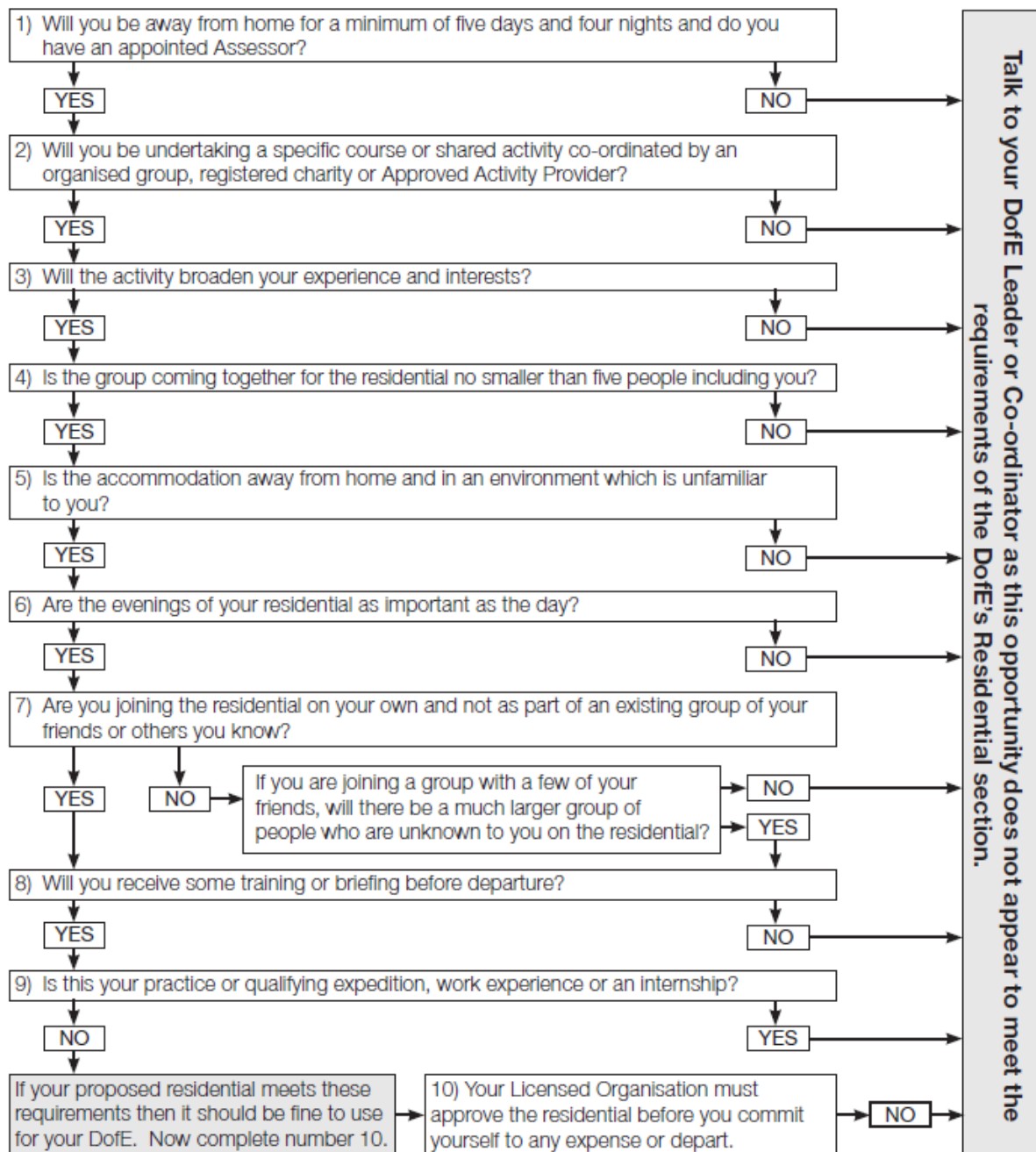
Who is going to support and assess you (This must be someone who is part of the leadership team **on the Residential**)?

What is their name:

Position/Job:

Email:

This flow chart can be used by young people alone or in conversation with their DofE Leader, to help decide if their choice of residential activity can count for their Gold DofE programme. If they are using a Residential section Approved Activity Provider then their trip will meet these requirements.



When complete please email/scan the whole form to your Centre coordinator and Dorset Council DofE Manager at

DofE@dorsetcouncil.gov.uk

Please do not commit yourself to any expenditure until you have had the go ahead via your DofE Centre Leader